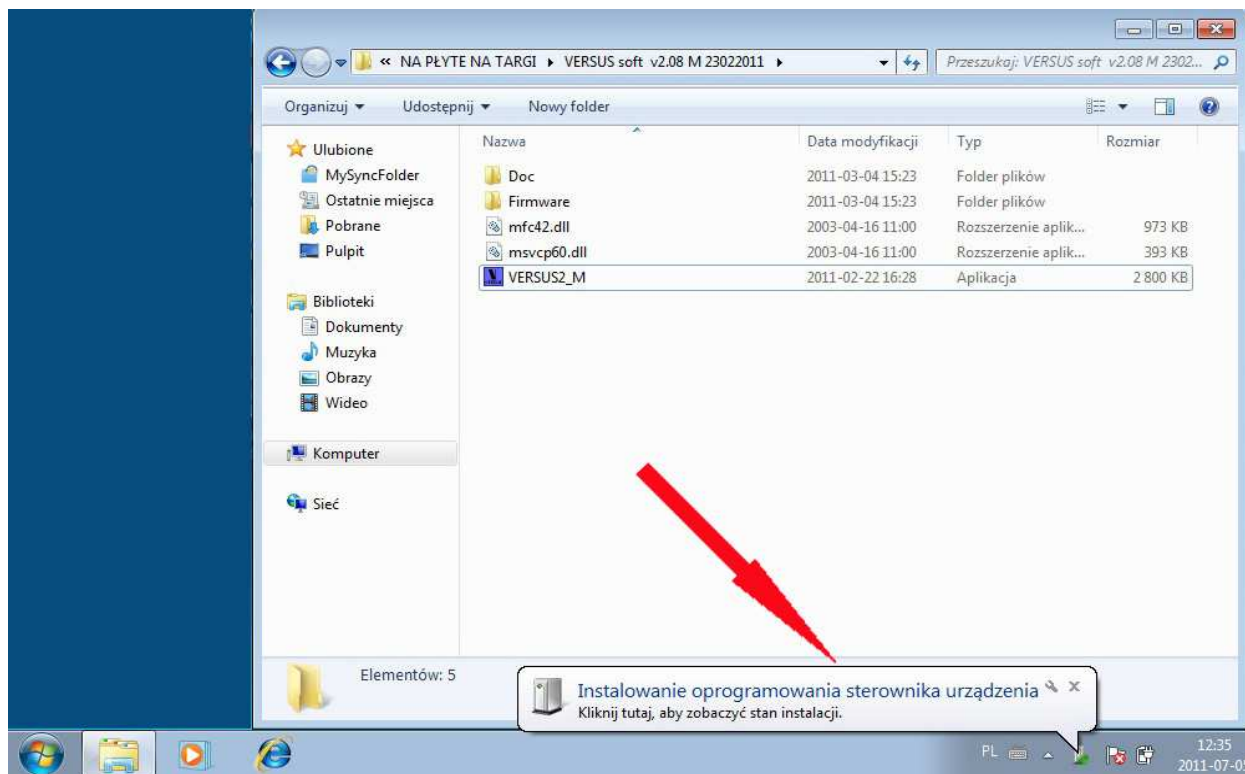
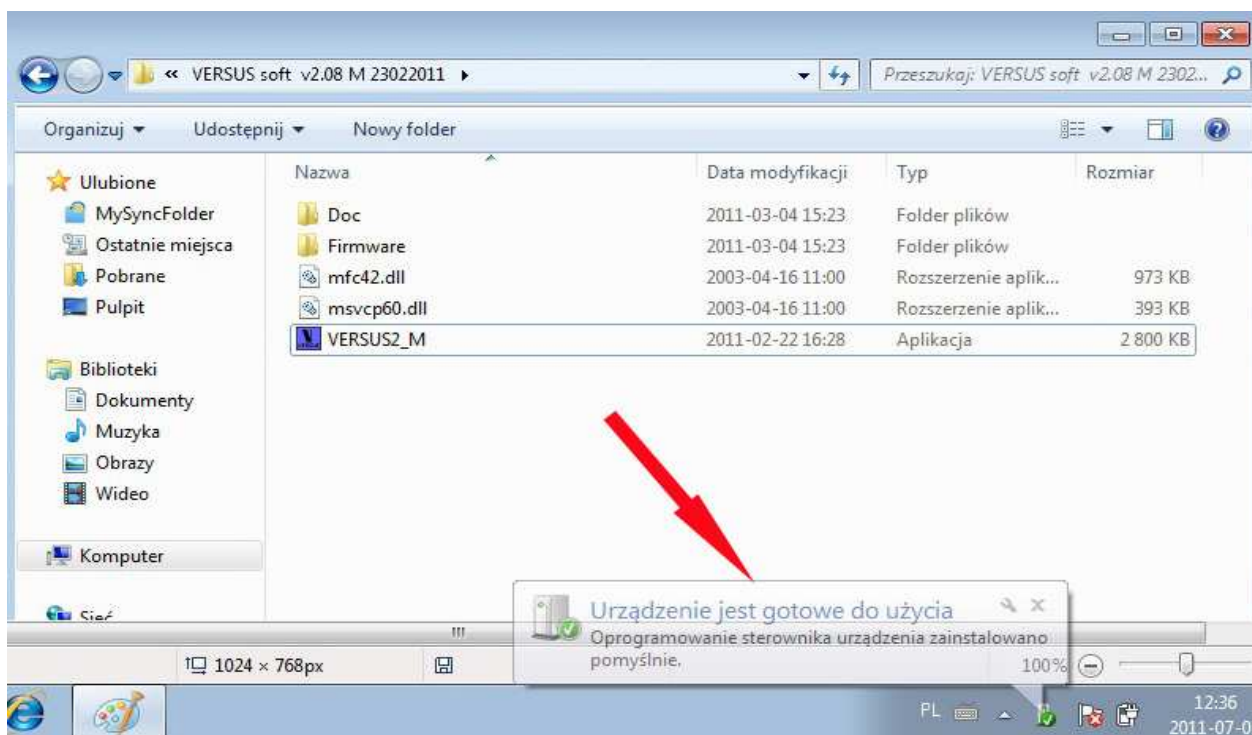


Instruction - installation of interface cable and VERSUS software on the computer with Win 7

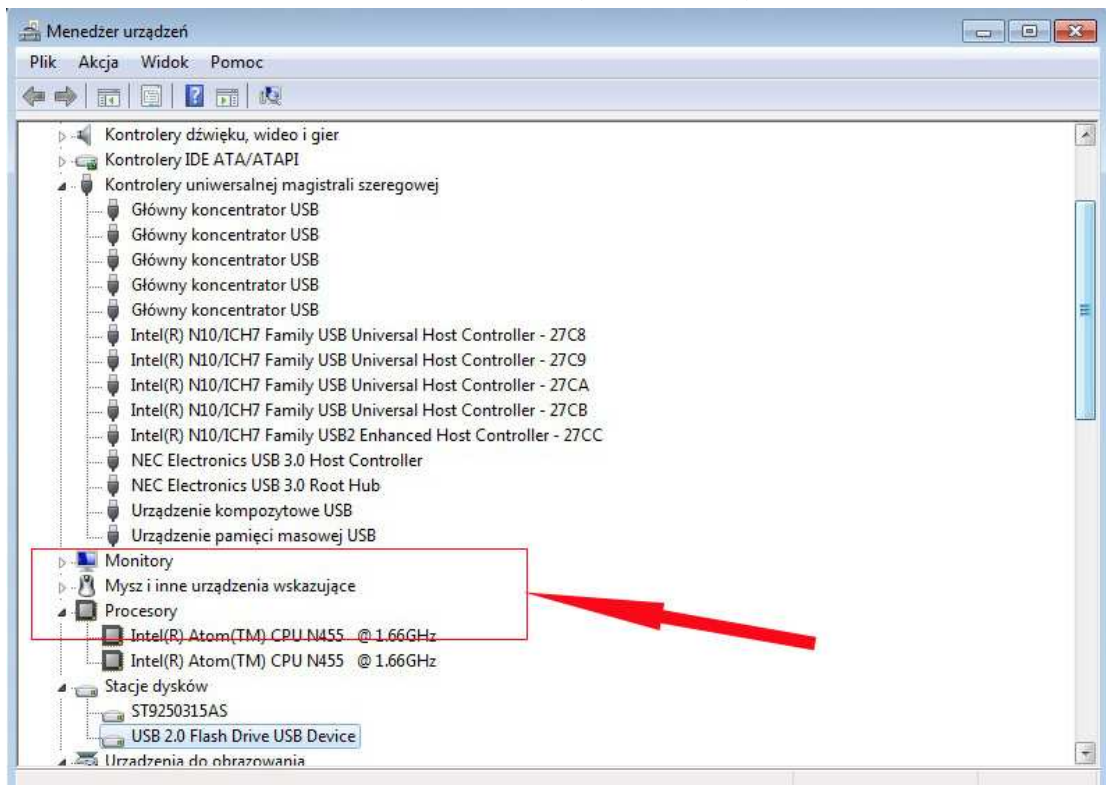
1. Please connect the Interface cable to USB port in the computer. Please install USB driver and VERSUS Software. You should see on the screen pop-up with message: "Installation of the software of the driver of the device"



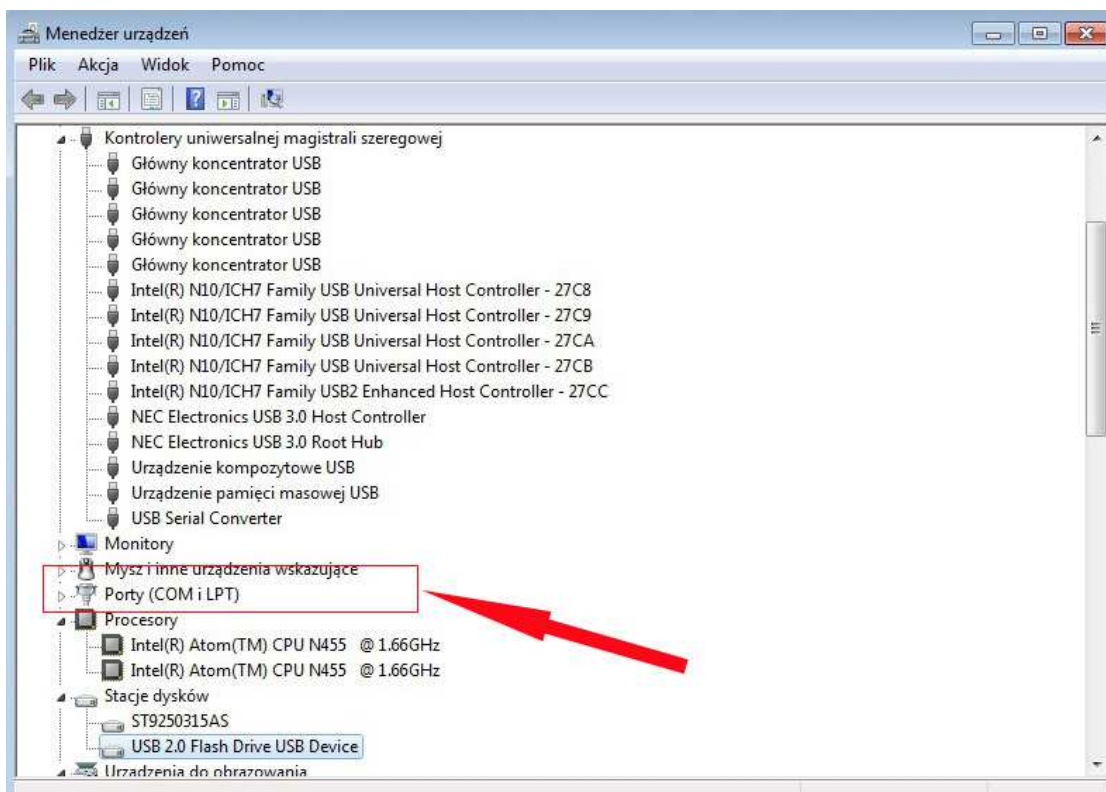
2. When the installation process goes correct, you can see another pop-up with message: "Device is ready to use"



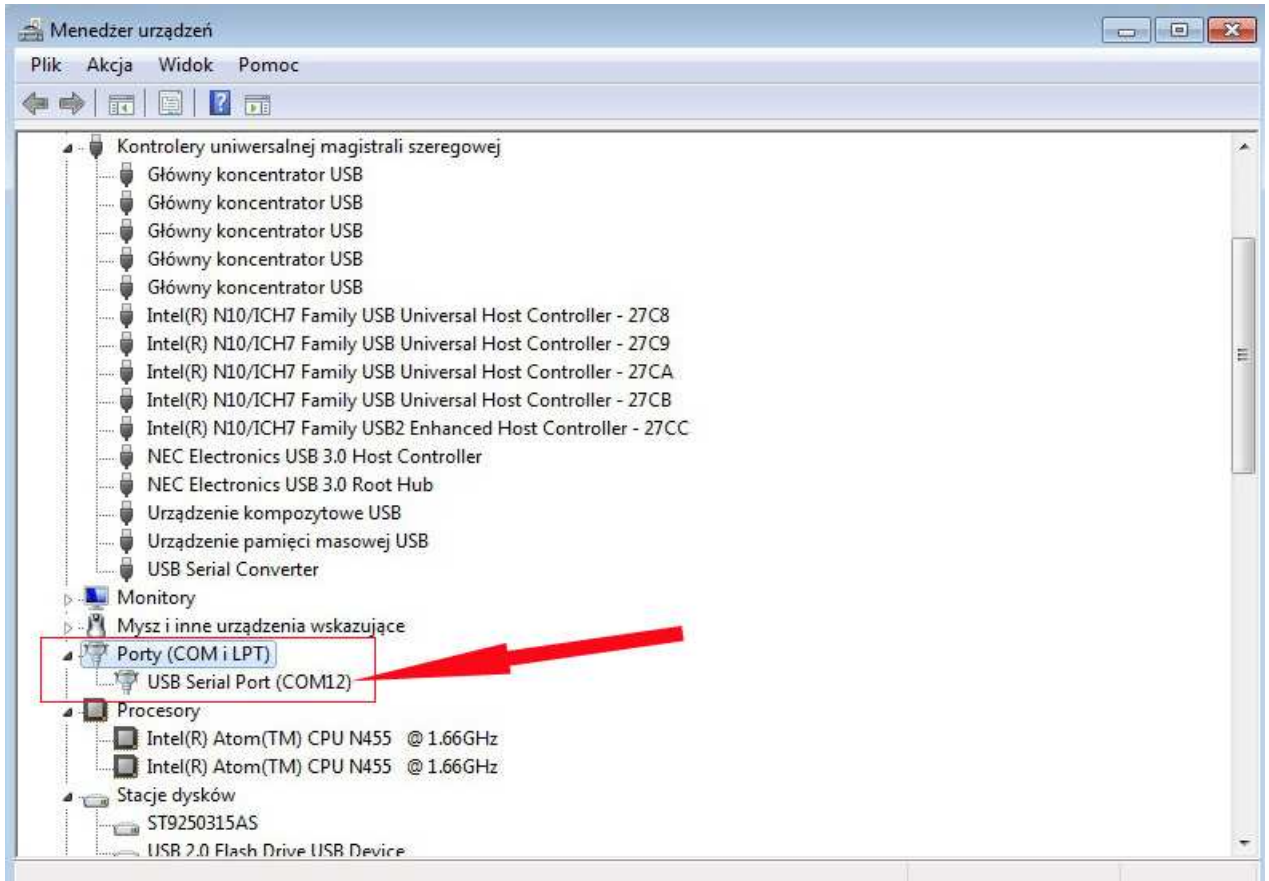
3. When you open Device Manager before the interface cable is connect to the computer, you can not see branch with Ports (COM and LPT).



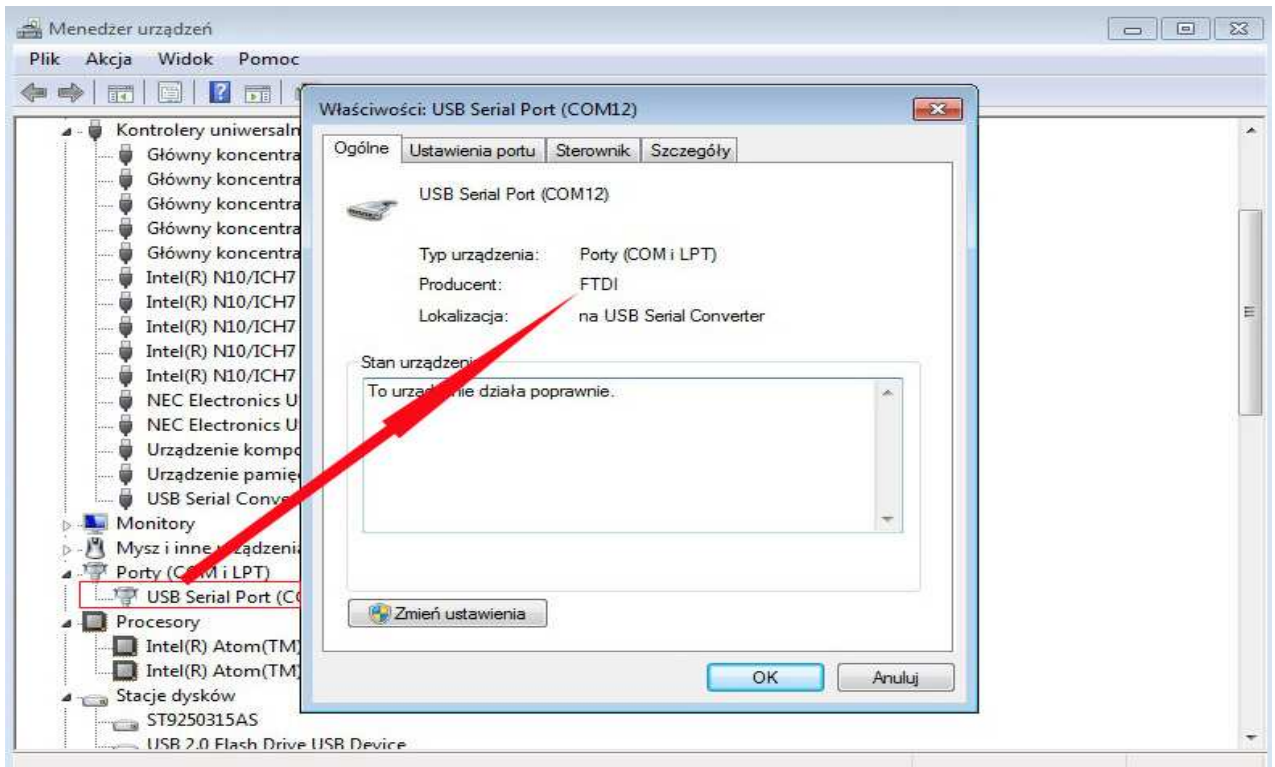
4. If your computer installed the interface cable properly, branch with Ports (COM and LPT) should be visible.

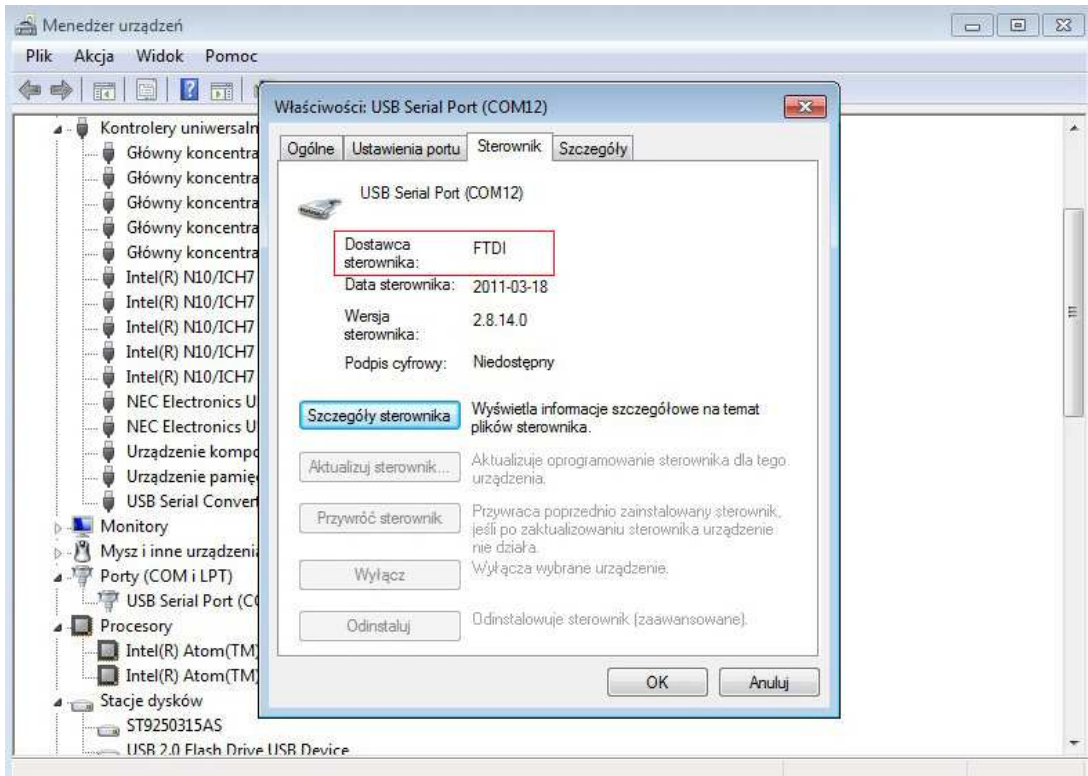


5. Please click on the line with Ports (COM and LPT) and unroll this – how you see it is a new Port (here with number 12).

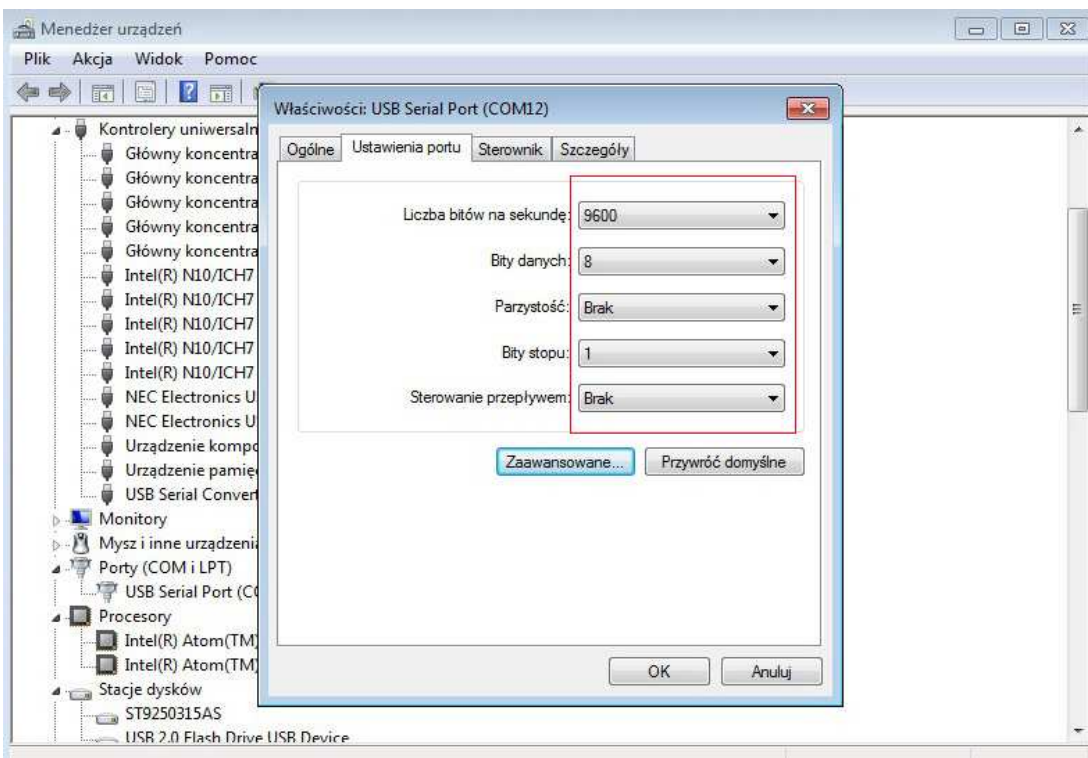


6. Please click right button of the mouse on it, and select Properties. In the case when you select the correct port, you should see: Producer (Manufacturer): FTDI

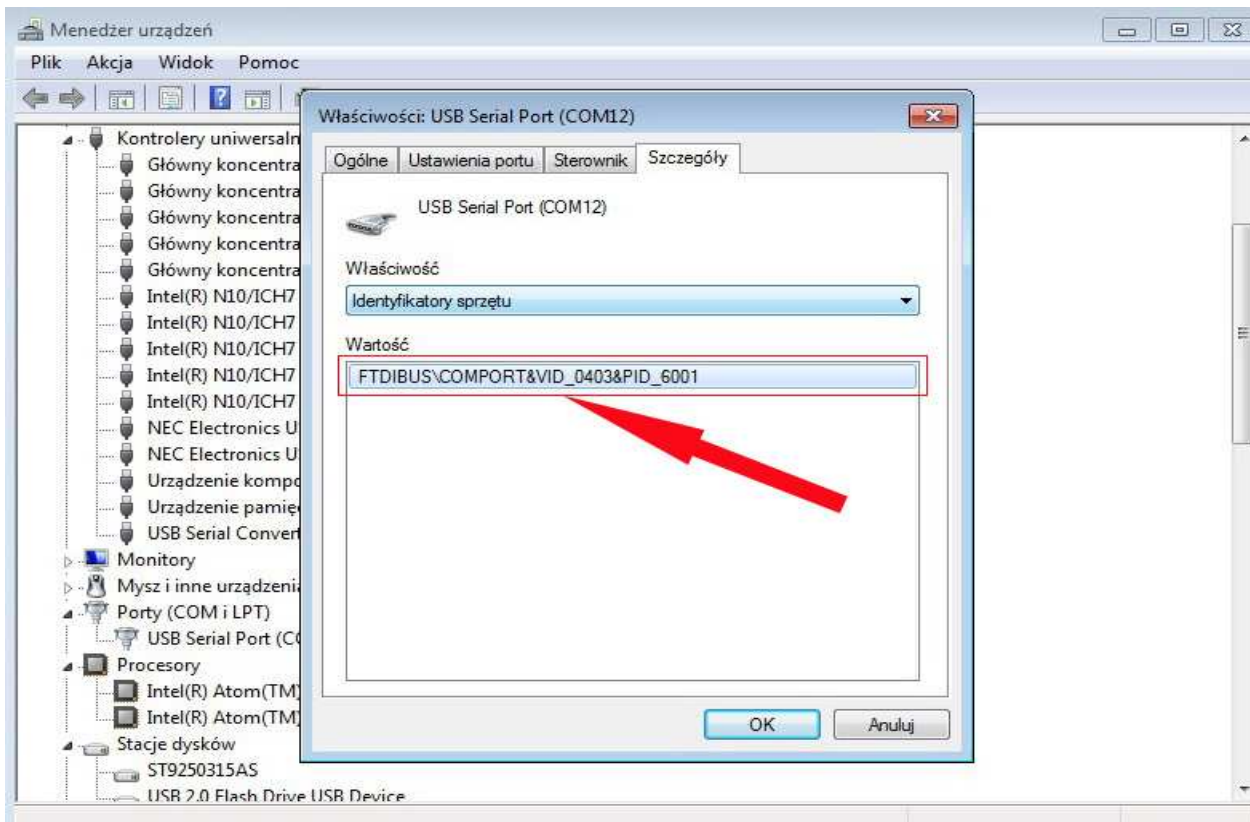




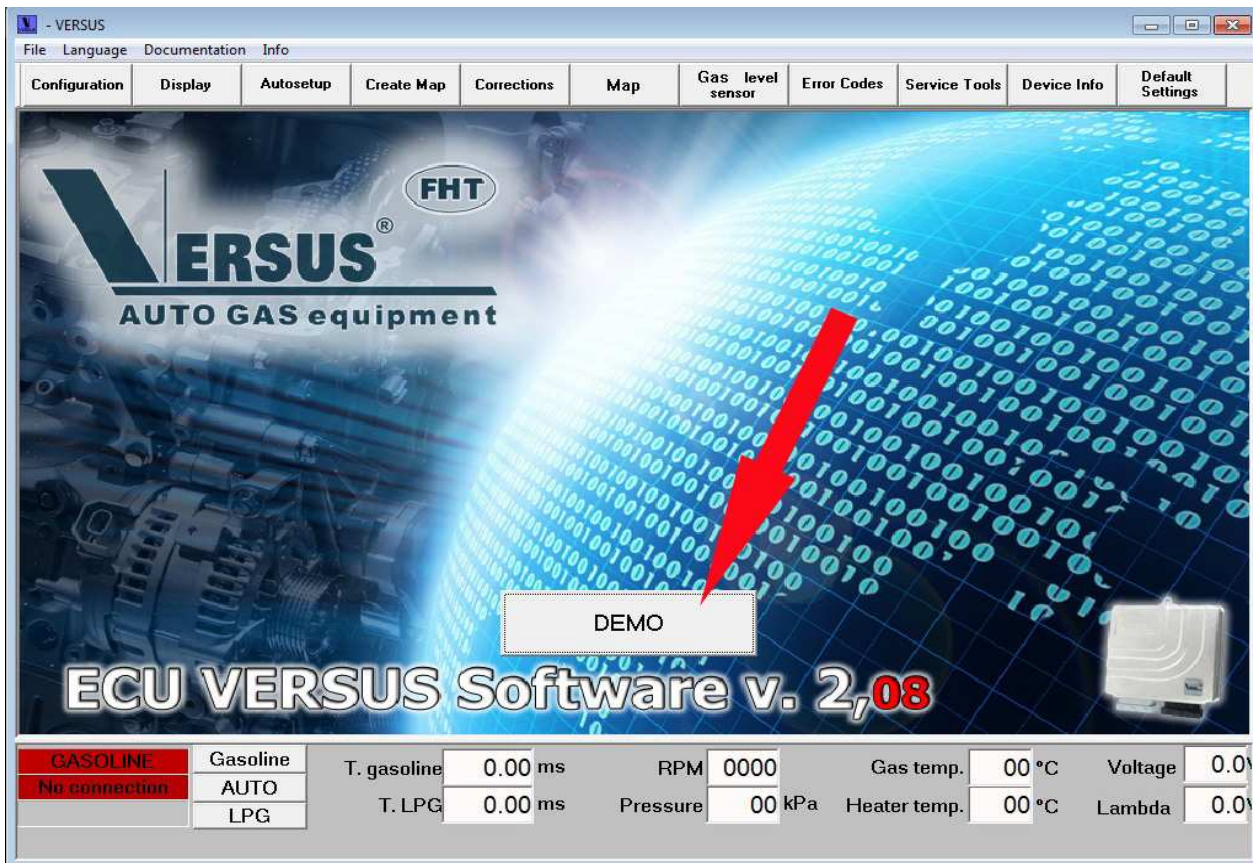
7. Please click on the Tab with Port settings – should be: 9600 Bits per second, Data Bits: 8, Parity: No, Stop Bits: 1, Flow Control: No – default settings.



- On the last Tab in Properties of USB Serial Port (COM...) in Identificators of devise should be – similar line like on the picture below. However sometimes you can see different digits depend of version.



- If is the problem with connection between computer and ECU, VERSUS software works in demo version.



10. If everything is fine – VERSUS software starts with full functionality in full version.

The screenshot shows the VERSUS software interface. At the top is a menu bar with options: File, Language, Documentation, Info. Below the menu bar is a toolbar with buttons: Configuration, Display, Autosetup, Create Map, Corrections, Map, Gas level sensor, Error Codes, Service Tools, Device Info, Default Settings. The main display area features the VERSUS logo and 'FHT' logo, with the text 'VERSUS AUTO GAS equipment'. Below this, it says 'ECU VERSUS Software v. 2,08'. A red arrow points to the 'ECU VERSUS Software v. 2,08' text. The background of the main display area shows a car engine and a glowing blue sphere with binary code. At the bottom, there is a data table with the following information:

GASOLINE	Gasoline	T. gasoline	21.18 ms	RPM	951	Gas temp.	50 °C	Voltage	14.4V
	AUTO	T. LPG	23.18 ms	Pressure	86 kPa	Heater temp.	70 °C	Lambda	1.0V
	LPG								